

ULWIII

First Automatic Production NPP LED Display

-  Automatic Production
-  High Integration Technology
-  Front & Rear XYZ Axis Adjustment
-  Signal & Power Dual Backup
-  User-friendly Design
-  Super Lightweight and Slim
-  Module-level Curving
-  Up to 7680Hz High Refresh Rate

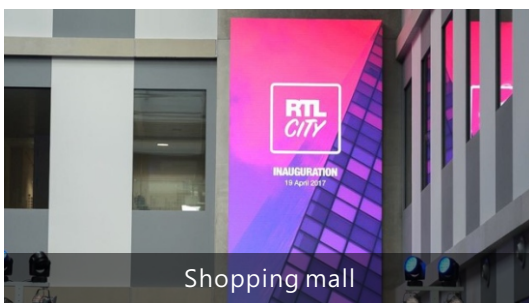
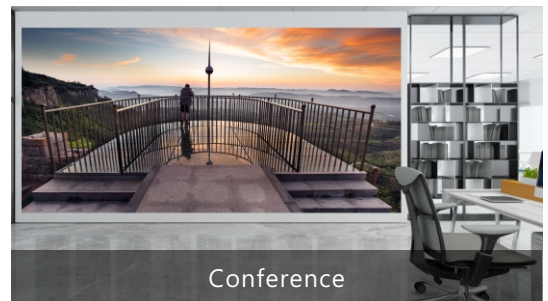
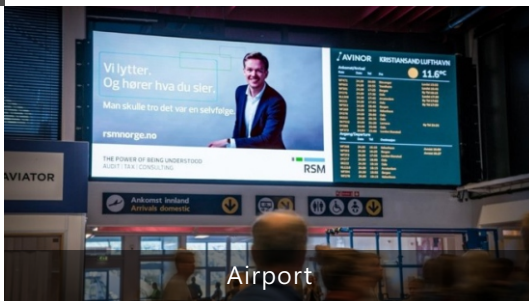


*Front&Rear Maintenance

FEATURES

- Automatic production ensures high quality and affordability
- Premium viewing experience
- Ultra stable operation
- Unlock creative installation style with flexible design
- Intelligent management system

APPLICATIONS



SPECIFICATIONS

Parameter	Value				
Pixel Pitch	0.9mm	1.25mm	1.5mm	1.8mm	2.5mm
LED Type	IMD	3-in-1 SMD	3-in-1 SMD	3-in-1 SMD	3-in-1 SMD
Brightness	600cd/ m ²	600-800cd/ m ²	600-800cd/ m ²	600-800cd/ m ²	600cd/ m ²
Pixels Per Module	160×360pixels	120×270pixels	96×216pixels	80×180pixels	60×135pixels
Pixel Density	113777pixels /m ²	640000pixels /m ²	409600pixels /m ²	284445pixels /m ²	160000pixels /m ²
Pixels Per Panel	640×360pixels	480×270pixels	384×216pixels	320×180pixels	240×135pixels
Module Size	150mm×337.5mm	150mm×337.5mm	150mm×337.5mm	150mm×337.5mm	150mm×337.5mm
Panel Size	600mm×337.5mm×45mm	600mm×337.5mm×45mm	600mm×337.5mm×45mm	600mm×337.5mm×45mm	600mm×337.5mm×45mm
Weight	5 kg/panel	5 kg/panel	5 kg/panel	5 kg/panel	5 kg/panel
Maintenance	Front	Front	Front	Front	Front
Ingress Protection	Rear IP30	Rear IP30	Rear IP30	Rear IP30	Rear IP30
Curve	0°~+3° (Concave)	0°~+5° (Concave)	0°~+7° (Concave)	0°~+7° (Concave)	0°~+7° (Concave)
Planeness	≤0.15mm	≤0.15mm	≤0.15mm	≤0.15mm	≤0.15mm
Material	Die-cast Aluminum	Die-cast Aluminum	Die-cast Aluminum	Die-cast Aluminum	Die-cast Aluminum
Calibration	Support brightness and chroma	Support brightness and chroma	Support brightness and chroma	Support brightness and chroma	Support brightness and chroma
Color Temperature	2,000K-9,500K Adjustable	2,000K-9,500K Adjustable	2,000K-9,500K Adjustable	2,000K-9,500K Adjustable	2,000K-9,500K Adjustable
Horizontal Viewing Angle	160°	160°	160°	160°	160°
Vertical Viewing Angle	160°	160°	160°	160°	160°
Contrast Ratio	5000:1	5000:1	5000:1	5000:1	5000:1
Input Power <Max>	135-140 W/panel	105-111 W/panel	100-140 W/panel	90-125 W/panel	75-80 W/panel
Input Power <Typical>	45-46 W/panel	35-37 W/panel	33-46 W/panel	30-41 W/panel	25-26 W/panel
Input Voltage	AC : 100~240 V	AC : 100~240 V	AC : 100~240 V	AC : 100~240 V	AC : 100~240 V
Processing Depth	16bit	16/18bit	16/18bit	16/18bit	16bit
Refresh Rate	3840 Hz	3840-7680 Hz	3840-7680 Hz	3840-7680 Hz	3840 Hz
Video Frame Rate	50/60Hz	50/60Hz	50/60Hz	50/60Hz	50/60Hz
LED Life Time	100,000 Hours	100,000 Hours	100,000 Hours	100,000 Hours	100,000 Hours
Operating Temperature/Humidity	-10°C~+40°C/ 10~80% RH	-10°C~+40°C/ 10~80% RH	-10°C~+40°C/ 10~80% RH	-10°C~+40°C/ 10~80% RH	-10°C~+40°C/ 10~80% RH
Storage Temperature/Humidity	-20°C~+60°C/ 10~85% RH	-20°C~+60°C/ 10~85% RH	-20°C~+60°C/ 10~85% RH	-20°C~+60°C/ 10~85% RH	-20°C~+60°C/ 10~85% RH
Certification	CE/CB/FCC/ ROHS/ CCC	CE/CB/FCC/ ROHS/ CCC	CE/CB/FCC/ ROHS/ CCC	CE/CB/FCC/ ROHS/ CCC	CE/CB/FCC/ ROHS/ CCC

*The brightness, refresh rate, power consumption vary according to product configuration

DIMENSIONS

